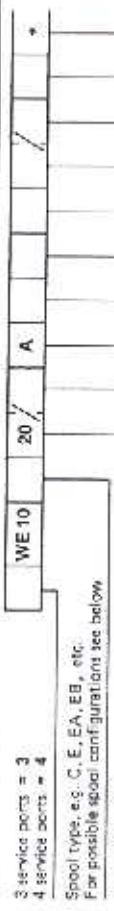


**Ordering Code**



WE 10 / 20 / A

3 service ports = 3  
4 service ports = 4

Spool type, e.g.: C, E, EA, EB, etc.  
For possible spool configurations see below

Series 20 = 20

Spring return = no desig.  
Without spring return = O  
Without spring return, with detent = OF

Oil immersed solenoid = A = A

24V DC = G24

DC solenoid with built-in rectifier for 220V = W220R  
(not possible with individual elec. connect., plug Z4 and Z5L)

220V AC = W220

Additional inductive limit switch to data sheet RE 24 830  
(only possible on valves with one solenoid)

Without hand emergency = no desig.  
With hand emergency = N  
With covered hand operators = N9

Electrical connections to data sheet RE 08 002

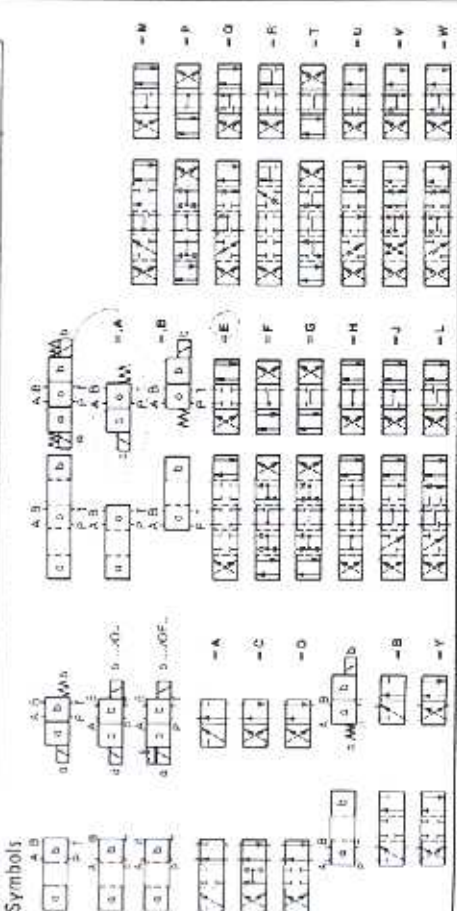
Individual connections

Angled plug at side = Z4  
Large angled plug = Z5  
Large angled plug with light = Z5L

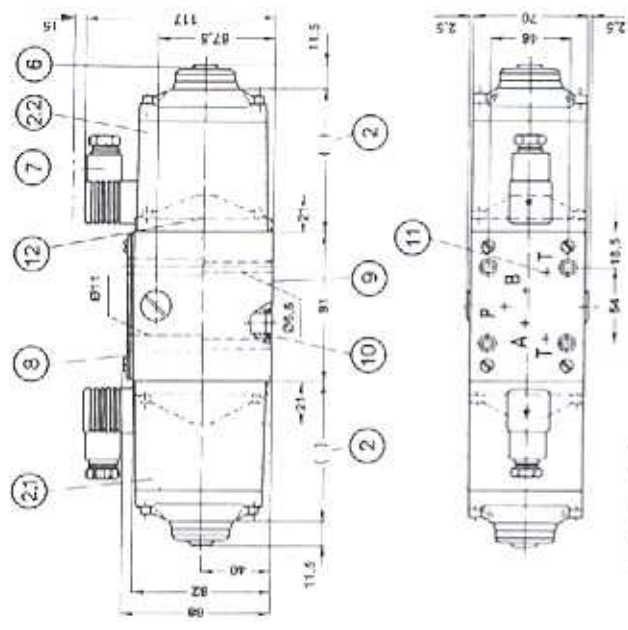
Without cartridge throttle = no code  
Throttle 0.8 mm dia. = B08  
Throttle 1.0 mm dia. = B10  
Throttle 1.1 mm dia. = B12

Suitable for mineral oils to DIN 51524 and 51525 = no desig.  
Suitable for phosphate-ester = V

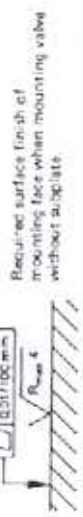
Further details in clear text



**Unit Dimensions (dimensions in mm)**



- 2 DC solenoid (194 mm without hand operator "N")  
AC solenoid (175 mm without hand operator "N")
- 2.1 Solenoid a, plug colour grey
- 2.2 Solenoid b, plug colour black
- 6 Hand emergency operator "N"
- 7 Angled plug Z4 to DIN 43 950, for further electrical connections, see RE 03 002
- 8 Nameplate
- 9 Parting pattern to DIN 24 340 Form A. Substitutes G69/31(3/8" BSP) G53/40(1 3/4" BSP) and valve fixing screws M6 x 50 DIN 913-10.3 (tightening torque 14 Nm) must be ordered separately to data sheet RE 45 054.
- 10 O-ring 12 x 2
- 11 Additional T-port can be used if connecting plate is drilled, except in conjunction with pressure reducing valve type ZD 3 10 C... (PE 26 584); ZD 3 10 C... (PE 26 584);
- 12 Cover for valve with 1 solenoid



**Technical Data (For applications outside these parameters, please consult us.)**

**Hydraulic**

Operating pressure: ports A, B, P max. perm. 315 bar  
port Y max. perm. 150 bar  
(For spool types A and B, port T must be used as a drain line if the operating pressure exceeds 150 bar.)

Flow: max. 100 L/min

Area open to flow (in neutral):  
for spool type Q: 6% of nominal opening  
for spool type W: 3% of nominal opening

Fluids: Mineral oil to DIN 51 524 and 51 525  
Phosphate-ester

Fluid temperature range: -30 ... +70°C

Viscosity range: 2.6 ... 380 mm<sup>2</sup>/s

Weight: Valve with 1 solenoid (DC) 4.7; (AC) 4.2 kg  
Valve with 2 solenoids (DC) 6.6; (AC) 5.6

**Electrical**

Available voltages  
(See below for ordering codes for AC solenoid)

AC	DC
(V): 42, 110, 127, 220, 230, 240	12, 24, 42, 60, 96, 110, 192, 196, 220
at 50 Hz	42, 110, 120, 127, 230, 240
at 60 Hz	

Power requirement  
Holding current (VA): 65  
In-rush current (VA): 480  
Duty cycle (max): contin.  
Switch-on time (max): 15-25  
Switch-off time (max): 40-60  
Ambient temperature (°C): -50 ... +50  
Cooling temperature (°C): -50 ... +50  
Switching rate (cycles/hour): 7200  
Insulation to DIN 40 050 : IP 65

The earth line (SL) must be connected to comply with the law.

**Note on AC Solenoids**  
These solenoids are available for 2 or 3 types of supply.  
eg. solenoid type W 110 for 110V, 50 Hz  
110V, 60 Hz  
120V, 60 Hz

Ordering code	W 42	42V, 50 Hz 42V, 60 Hz	Ordering code	W 127	127V, 50 Hz 127V, 60 Hz
Ordering code	W 110	110V, 50 Hz 110V, 60 Hz 120V, 60 Hz	Ordering code	W 220	220V, 50 Hz 220V, 60 Hz 240V, 50 Hz