

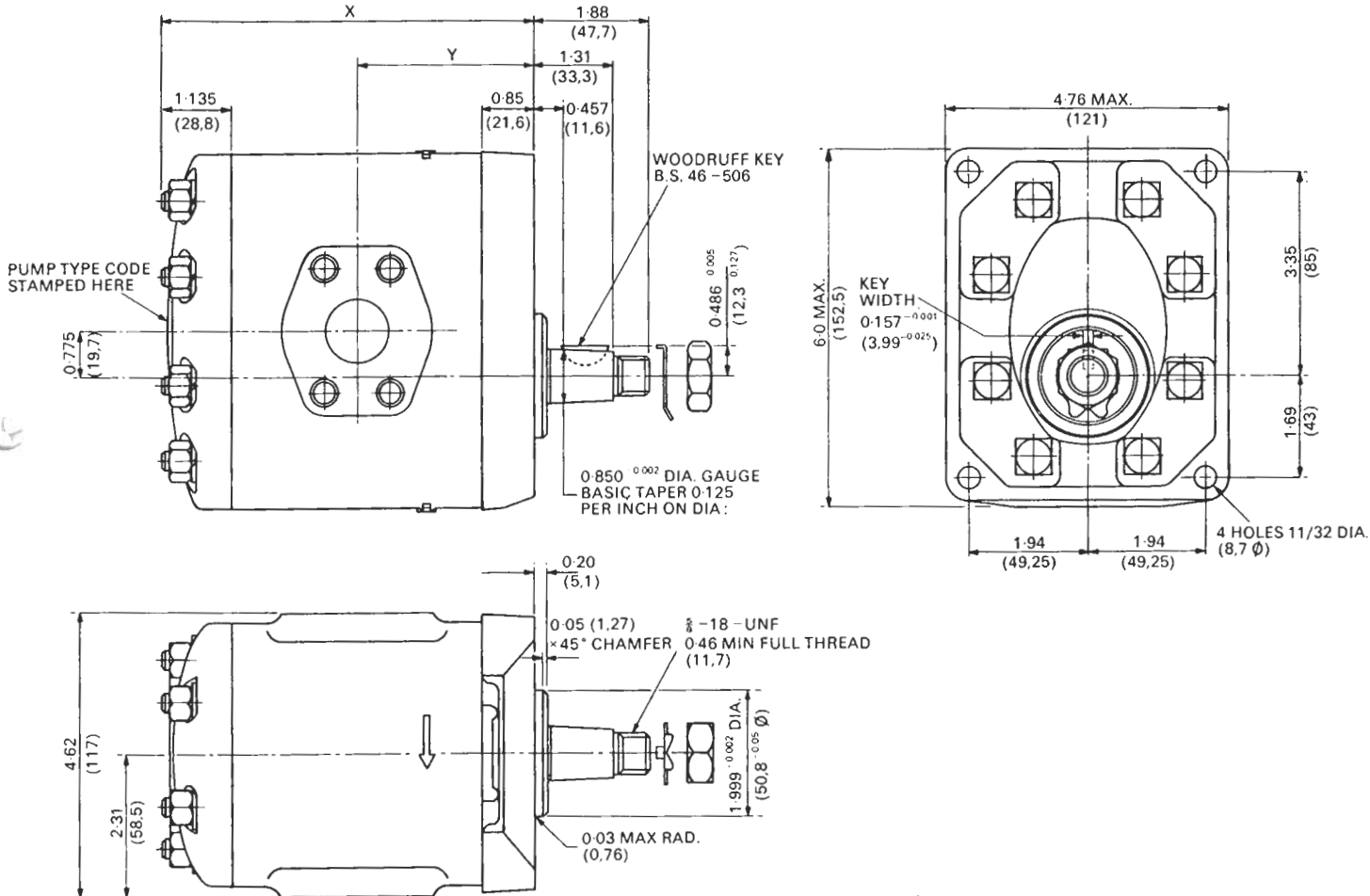
GROUP 2P

Group 2P Installation Dimensions

All dimensions in inches with mm equivalents in brackets.

Pump rotation Anti-clockwise as shown.

Pump weight 13 lb (5,9 kg) average, without connectors.



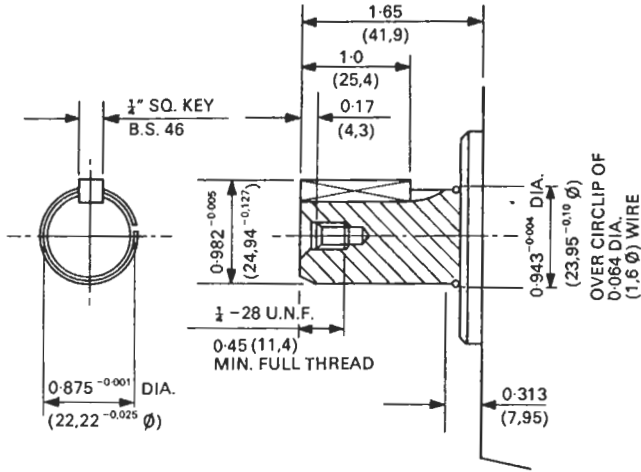
The variable dimensions X and Y are tabulated right. All other dimensions are common to group 2 pumps. Design improvements may lead to dimensional changes and these figures should be confirmed before use.

Pump Type	Dimension X -0.050 in (1,27 mm)		Dimension Y -0.040 in (1 mm)	
	in	mm	in	mm
2P 3050	4.56	115,8	2.15	54,6
2P 3070	4.74	120,4	2.25	57,2
2P 3090	4.92	125,0	2.35	59,7
2P 3105	5.61	142,5	2.70	68,6
2P 3120	5.74	145,8	2.77	70,4
2P 3146	5.99	152,2	2.89	73,4
2P 3158	6.14	156,0	3.00	76,2

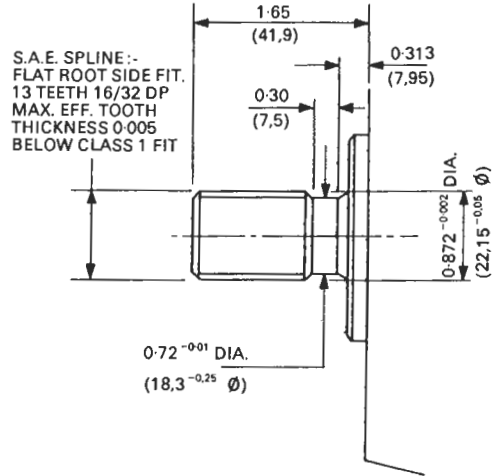
To widen the range of application of Group 2P pumps, variants are available embodying the features illustrated below. Each feature is identified by a code letter and this must be used in conjunction with the Coding Chart when ordering.

DRIVE SHAFTS

Parallel Shaft Code P

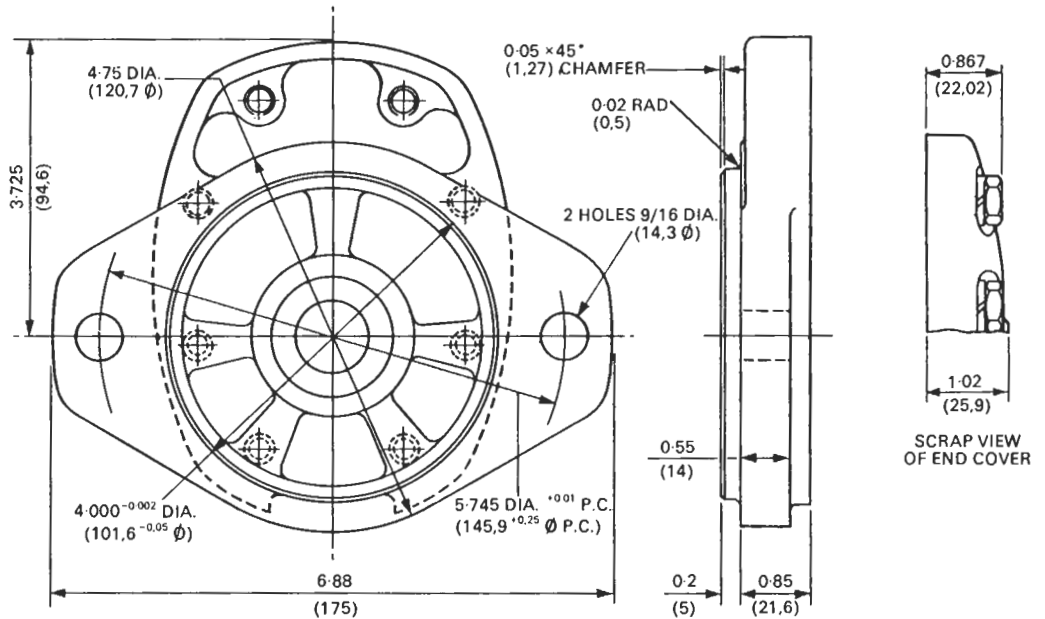


Splined Shaft Code S



MOUNTING FLANGES

2-Bolt Mounting Flange Code S



MATCHES SAE B FLANGE PROFILE