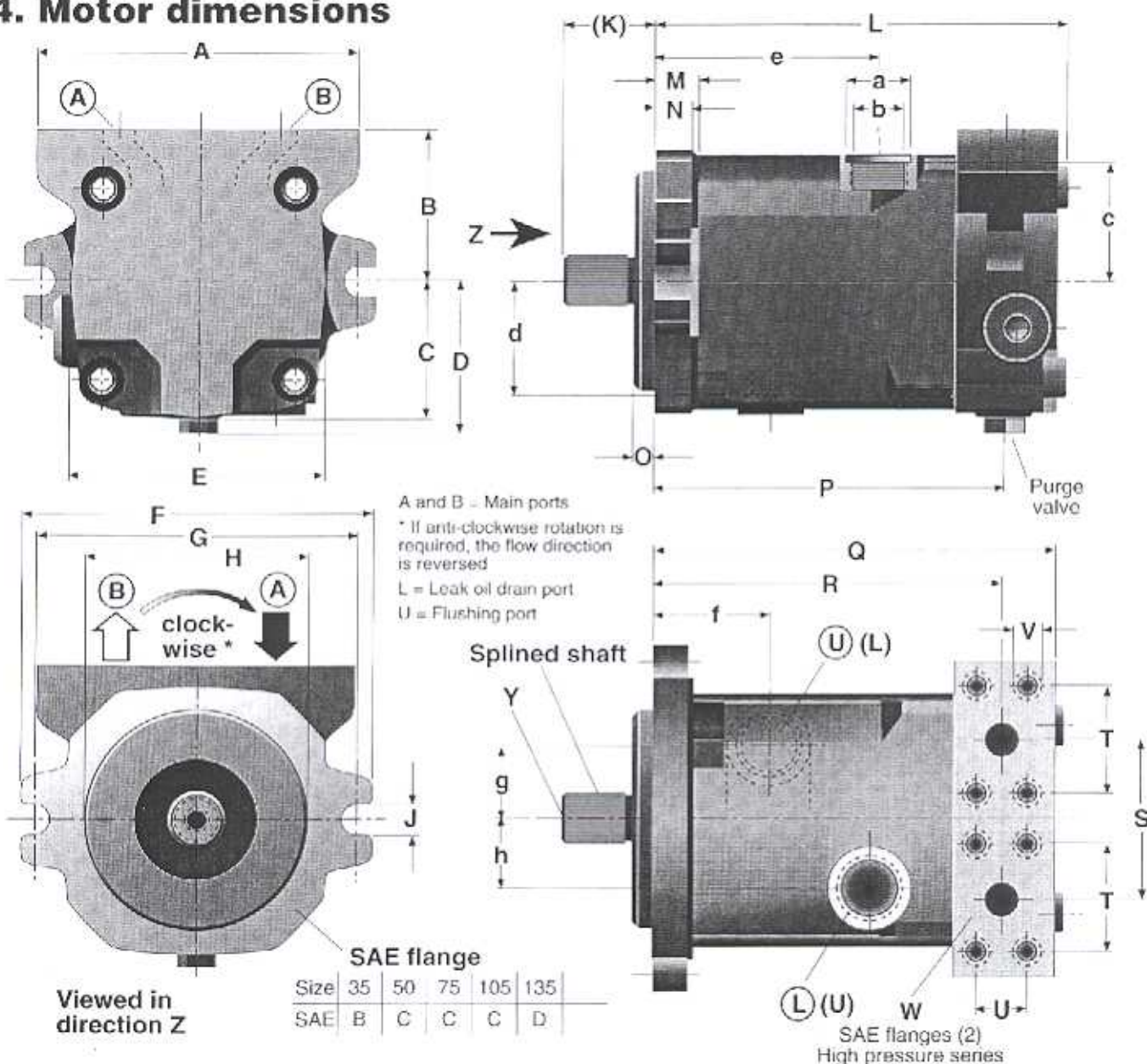


4. Motor dimensions



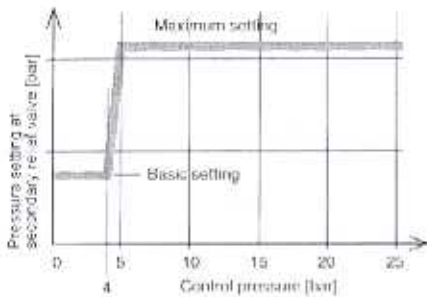
Dimensions (in mm)

Nom. size	A	B	C	D	E	F	G	H (-0,05)	J	(K)	L	M	N	O	P	Q	R	S	T	U
35	146	68,5	60,5	66,5	116	162,5	146	101,6	14	41,2	187,6	18	15	9,65	162,1	183,6	161,1	74	50,8	23,8
50	146	68,5	67,5	74	133	200	181	127	17,5	55,4	201,6	21	18	12,7	176	197,6	175,1	74	50,8	23,8
75	166	79	72,5	77,5	144	200	181	127	17,5	55,4	229,7	21	18	12,7	203,3	221,3	196,3	84	57,2	27,8
105	166	82,5	80,5	82,5	159	200	181	127	17,5	55,5	255,2	21	18	12,7	226	244	218	84	57,2	27,8
135	166	88	86	88	168	250	228,6	152,4	20,5	74,6	277	23	20	12,7	249,5	266,5	240,5	84	57,2	27,8

Nom. size	V	W	Splined shaft profile ANSI B 92.1 $\alpha = 30^\circ$	Y Internal thread	a Ø	b Two threads	c	d	e	f	g	h	Weight [kg]
35	M 10, 17 deep	3/4"	Ø 24,98; 15 splines; 29 mm	M 8; 22 deep	30	M 22x1,5; 15 deep	54,5	54,5	102	54	34	33	16
50	M 10, 17 deep	3/4"	Ø 34,51; 21 splines; 41 mm	M 10; 15 deep	30	M 22x1,5; 15 deep	61	60,5	112	60	40,5	39,5	18
75	M 12, 16 deep	1"	Ø 34,51; 21 splines; 41 mm	M 10; 23 deep	30	M 22x1,5; 15 deep	66	65,5	127	62	46	35	25
105	M 12, 17 deep	1"	Ø 37,68; 23 splines; 38,5 mm	M 12; 29 deep	30	M 22x1,5; 15 deep	75	73,5	143	69	50	40	32
135	M 12, 17 deep	1"	Ø 44,05; 27 splines; 62 mm	M 12; 29 deep	34	M 26x1,5; 17 deep	80	80,5	160	90	45	45	38

For binding dimensions and other dimensions not indicated, please see installation drawings. - Subject to change in the interests of technical progress.

5. Secondary pressure relief valve



Pressure profile of variable-response secondary pressure relief valves as a function of control pressure.

5.1 Secondary pressure relief valves, fixed-setting

In the case of these valves, as described on page 2, the set values have to be indicated on ordering. Modifications to the settings are only possible in practice within the as-delivered adjustment range.

5.2 Variable-response secondary pressure relief valves

Variable-response secondary pressure relief valves are preset to a basic value (see diagram on the left). The valve set pressure is increased from this basic setting to the maximum setting by applying a control pressure of approx. 5 bar to ports X4 and Y4.

The control pressure normally applied is the actuating pressure of the directional valve which controls the motor.

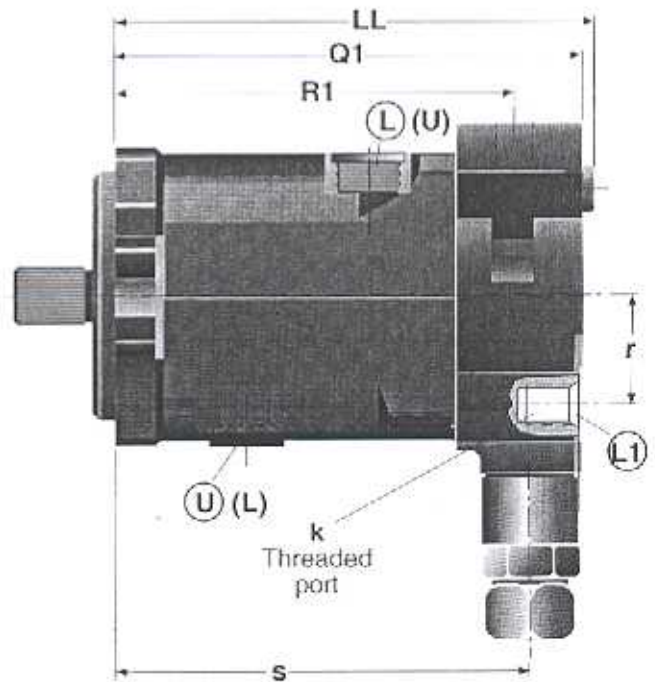
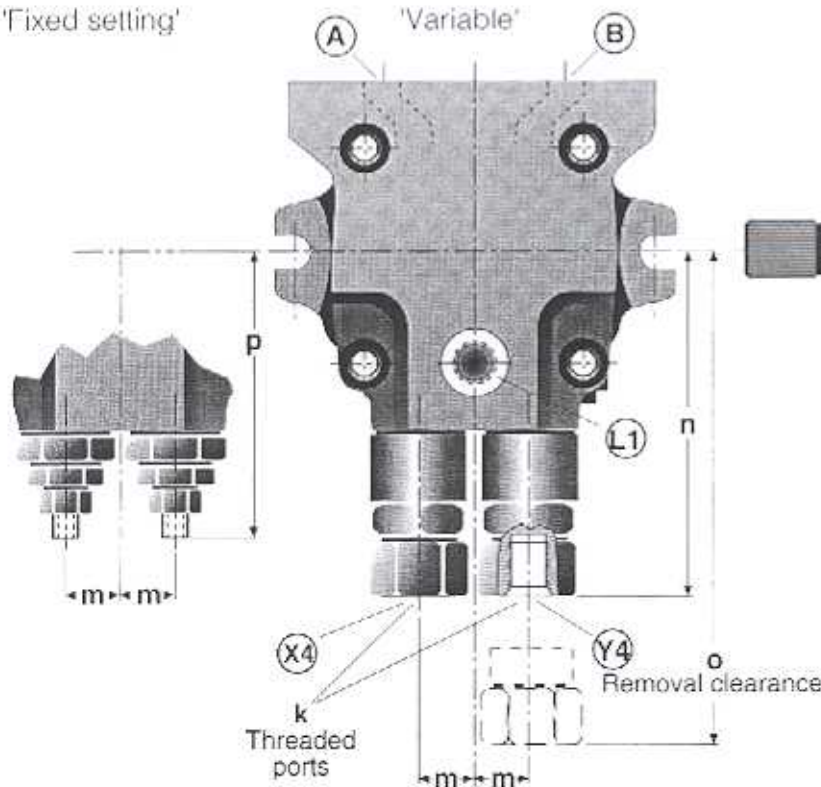
Setting the secondary pressure relief valves to their basic value results in a more gentle coast-down of the rotating masses, with the braking torque being determined by this lower pressure value (e.g. as might be desired in the case of rotary drives in open-loop applications).

Increasing the response value of the secondary pressure relief valves to their maximum setting switches the system to maximum braking torque.

5.3 Dimensions with secondary pressure relief valves (Fixed setting / variable)

Version with secondary pressure relief valves

'Fixed setting'



- A and B = Main ports
- X4 and Y4 = Response control ports
- L1 = Control oil drain (must be connected)
- L = Leakage oil drain port
- U = Flushing port

Dimensions (in mm)

Nom. size	k	m	n	o	p	r	s	LL	Q1	R1	Weight [kg]
35	M14 x 1,5 20 deep	22	129	184	-106	44,5	169,6	192,6	188,6	161,1	17
50		22	139,5	194,5	-117	60,5	201,3	229,7	221,3	196,3	26
75		28,5	152,5	207,5	-130	73,5	222,5	255,2	243,5	218	33
105		28,5	158,5	213,5	-136	79,5	245	277	266,5	240,5	39
135											

For binding dimensions and other dimensions not indicated, please see installation drawings. - Subject to change in the interests of technical progress.